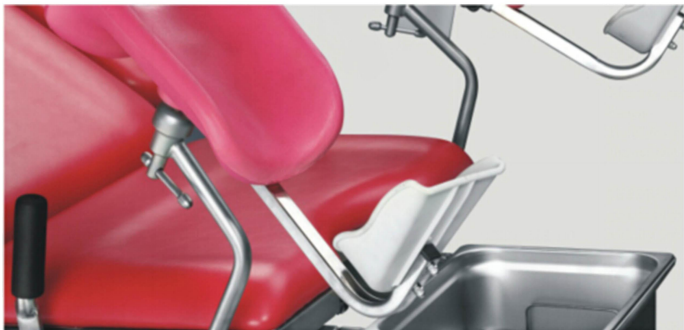


HFMED™ HFEPB99B

Electric Operating Table

HFEPB99B is electric operation table for gynaecology and obstetrics, with full affinity profile. Any colors are available for the mattress. Made of full premium 304 stainless steel. Double control (hand remote control and pedal switch)



HFMED ACCESSORIES

- 2 Handle Support
- 2 Foot Support
- 1 Dirt pots



Official QR code



YOUR IDEAL OPERATING TABLE SUPPLIER

HFMED™

YOUR IDEAL OPERATING TABLE SUPPLIER
SHANGHAI HUIFENG MEDICAL INSTRUMENT CO., LTD.
Address: No. 7753 Chuannanfeng Road Pudong New District, Shanghai,
P. R. China.
Tel: +86-021-58084992
Mob: +86-13918165133
Email: lisa@huifeng-co.com
web: <http://en.huifeng-co.com>

HFMED™ CE

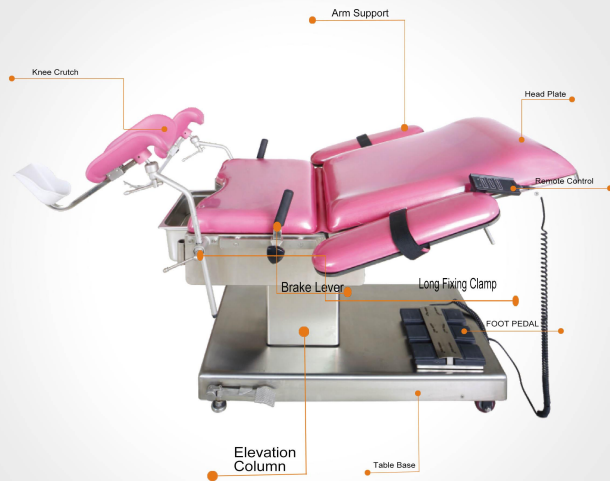
HFMED

YOUR IDEAL OPERATING TABLE SUPPLIER
MEET THE VARIOUS REQUIREMENTS OF GENERAL SURGERY

HFEPB99B

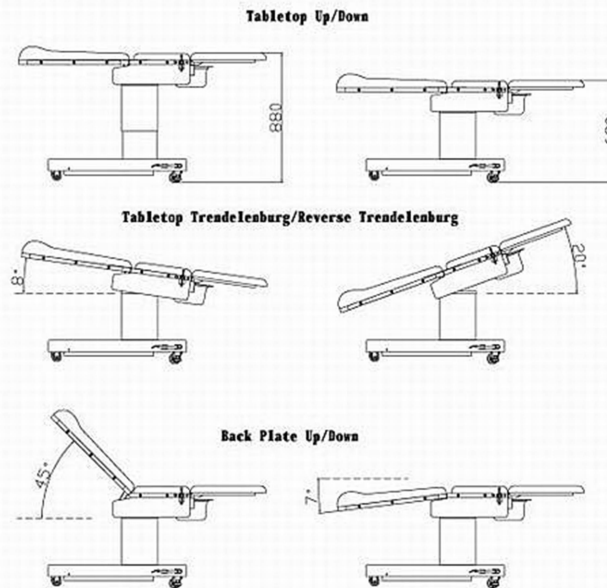


SHANGHAI HUIFENG MEDICAL INSTRUMENT CO., LTD



HFEPB99B

HFEPB99B
operation position sketch



Main Technical Data

HFEPB99B Electric Operating table	
Tabletop Length	1780mm
Tabletop Width	600mm
Elevation (down/up)	680/880mm
Seat Plate(up/down)	8°/20°
Back Plate(up/down)	45°/7°
Power	220v,50Hz,1.0kw

